



LEE ^{TO} SEA GREENWAY

PROPOSAL





Introduction

The **Lee to Sea Greenway** is a proposal for a continuous, world class greenway along the River Lee valley, from Inniscarra Dam, through Cork city and around Cork harbour to the coast, finishing at Crosshaven. Significant sections of the route already exists. Walkers, runners, leisure and commuting cyclists will all be able to enjoy and benefit from using the picturesque, accessible and safe greenway. Ultimately this will be a great regional asset, tourism draw, better for business, our health and our environment. This route will be a major contribution to **Cork's 2040 strategy** and **Ireland's Our Plan 2040** to significantly grow the city and metropolitan areas, help grow Cork as a highly competitive European city.

Purpose

The purpose of this discussion document is to provide more detail on the potential Lee to Sea Greenway strategic concept.

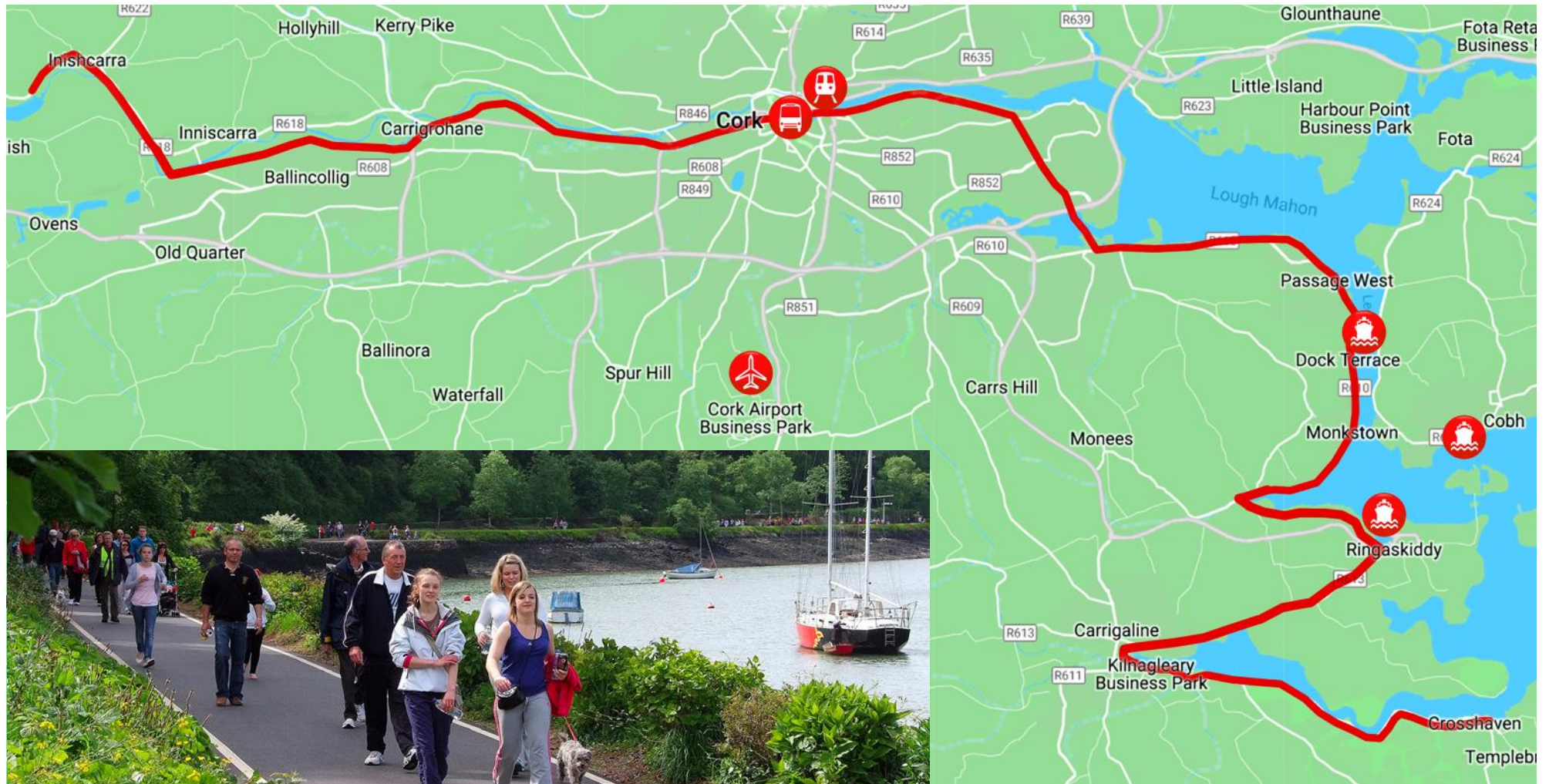
Objectives

- to ignite a discussion in how best to progress the concept into a reality,
- gain support from public and private partners,
- raise the profile of the greenway route as a future international asset,
- spell out the huge benefits for all, and
- to set up a steering committee to lead delivery / implementation, source land ownership and funding, and maintenance plan

Contents

Introduction	P.2
Purpose	P.2
Objectives	P.2
Indicative route map	P.3
Who will the greenway serve and benefit?	P.4
Key connections to and from greenway	P.4
Key connections to and from city centre section	P.5
What are the route's natural, historic and cultural attractions?	P.6
Existing sections of greenway	P.7
Proposed sections of greenway	P.8
Where to we go from here?	P.9
Contact	P.9

Indicative route map



Carrigaline Lions Club Charity Walk
Carrigaline Lions ©

Who will the greenway serve and benefit

- A quarter of a million residents within a few minutes of the route,
- Staff travelling to work,
- Students travelling to school, college and University,
- Tourists enjoying the scenery,
- Businesses:
 - shops, cafes, restaurants, B&Bs and hotels along the route,
 - happier and healthier staff getting to work, and
 - business traffic travel times with reduced commuter traffic on roads
- Everyone regardless of age or ability
- Close to train and bus stations,
- Ringaskiddy ferry and Passage West ferry
- Improve peoples health, and
- Reduce commuter traffic congestion, noise and air pollution.



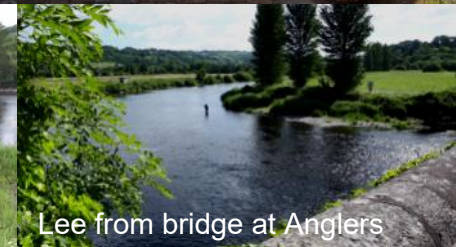
Iniscarra Reservoir



Iniscarra Dam

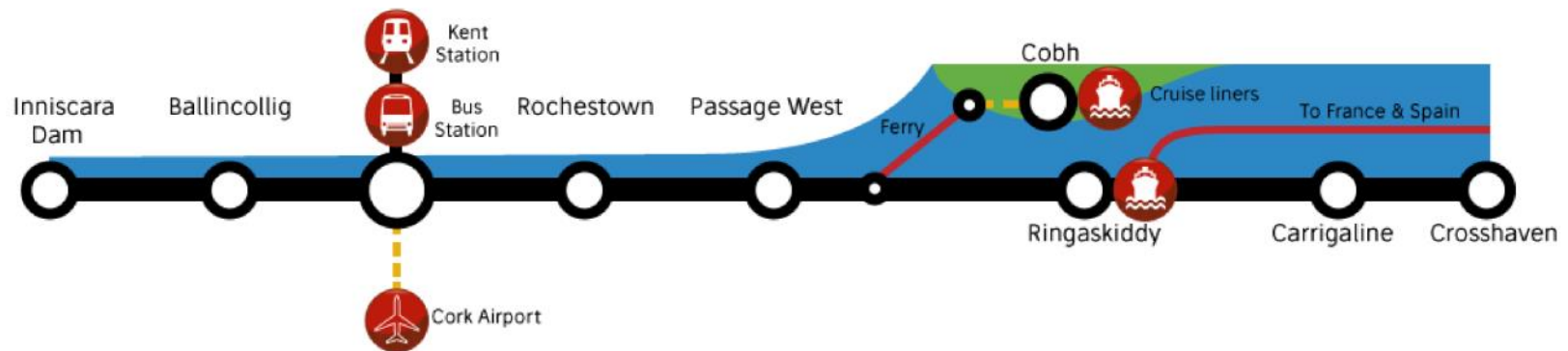


Iniscarra Bridge



Lee from bridge at Anglers

Key connections to and from greenway



Key connections to and from city centre

The Lee to Sea greenway isn't just about leisure and tourism.
The route would run past or is adjacent to:

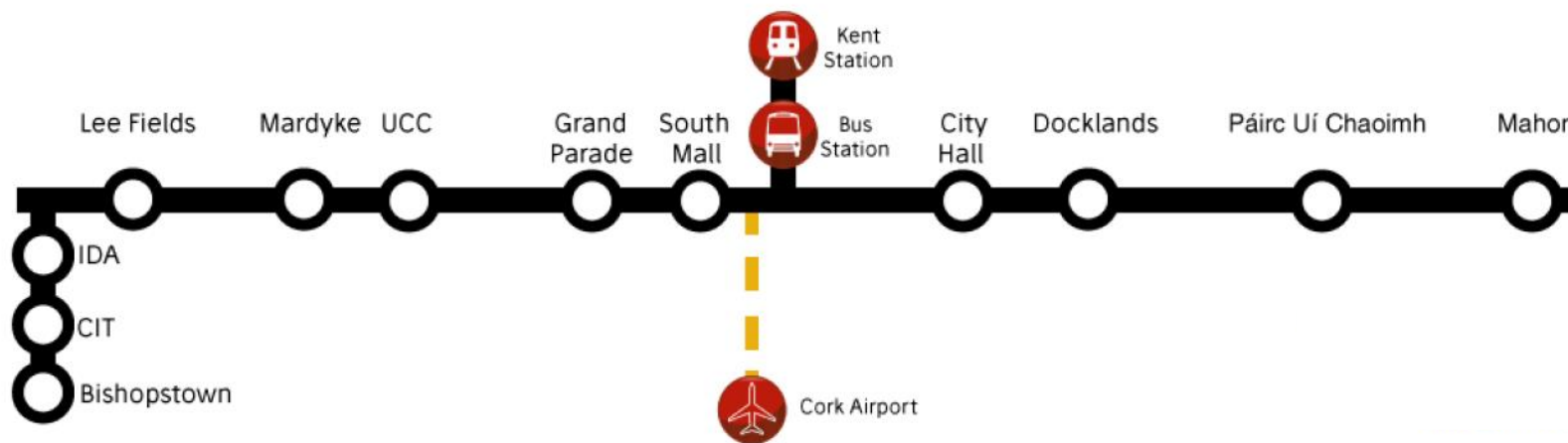
- many of Cork's small, medium and large business employers,
- all of Cork's third level colleges,
- nurseries and primary schools,
- hospitals,
- music venues, Fitzgerald Park and sports clubs, and
- the City Docklands strategic development.



Cork City Hall



University College Cork



University College Cork



English Market



Lee Rowing Club



What are the route's natural, historic and cultural attractions?



Competitive, healthy and welcoming global cities are those with the best quality of life with good access to green space, cultural and recreational opportunities, and appealing and sustainable transport options such as the Lee to Sea greenway.

Nature. For those who like the countryside or the coast, the route captures the defining natural features of the region as it follows the River Lee's beautiful glacial valley into Cork's natural harbour (a nationally important site for marinelife and waterfowl). To the west is Inniscarra dam, steep, wooded valleys, and rich farmlands. In the south-east, the route passes along Lough Mahon and the harbour before it reaches the coast.

History. For those who like history, the route has an exceptionally rich legacy. These include the ruins of St Senan's Abbey and the Ballincollig Gunpowder Mills in the West. Elizabeth Fort, Old Gaol and Blackrock Castle are located in the city and near the route. Protecting the harbour entrance in the south is the Camden Fort Meagher, one of the world's finest examples of a classical Coastal Artillery Fort. Spike Island is close by also.

Culture. If culture is your thing, then the route passes near all Cork's art galleries, its music venues, cinemas, and many of its best restaurants and pubs.. And for sports fans, the route passes multiple sports pitches, watersport club houses, and the newly refurbished Páirc Uí Chaoimh stadium, again hosting enormous concerts and GAA games.



Existing sections of greenway

Many sections of the greenway already exist, are supported through the Cork Cycle Network Plan and are widely used. Facilities like toilets and parking areas are already in place in many areas. There are numerous services and facilities throughout the route including businesses, shops, schools, sports clubs, community centers, restaurants and cafes.

Existing sections include:

- Blackrock Castle,
- Mahon to Passage West,
- Carrigaline to Crosshaven, and
- Around the Gunpowder Mills, Ballincollig.

Existing sections could be reviewed to ensure coherent network of greenway to ensure high quality finish throughout.



“Drake’s Pool”
by Eugene O’Loughlin ©



Underpass, Mahon



Former Blackrock Station



Lee Weir between Kinsley and Old Waterworks

Proposed sections of greenway

Extending the pathway would add a variety of options to different users along the route, while also attracting more users, and allow longer distance use – by running groups and recreational and commuting cyclists. Joining up these routes also has strategic value, allowing the city and county to brand and market the route as a valuable tourism draw, but would also encourage more locals to get out and be active. Bridges and other infrastructure will be necessary.



A **holistic approach** would ensure greenway is;

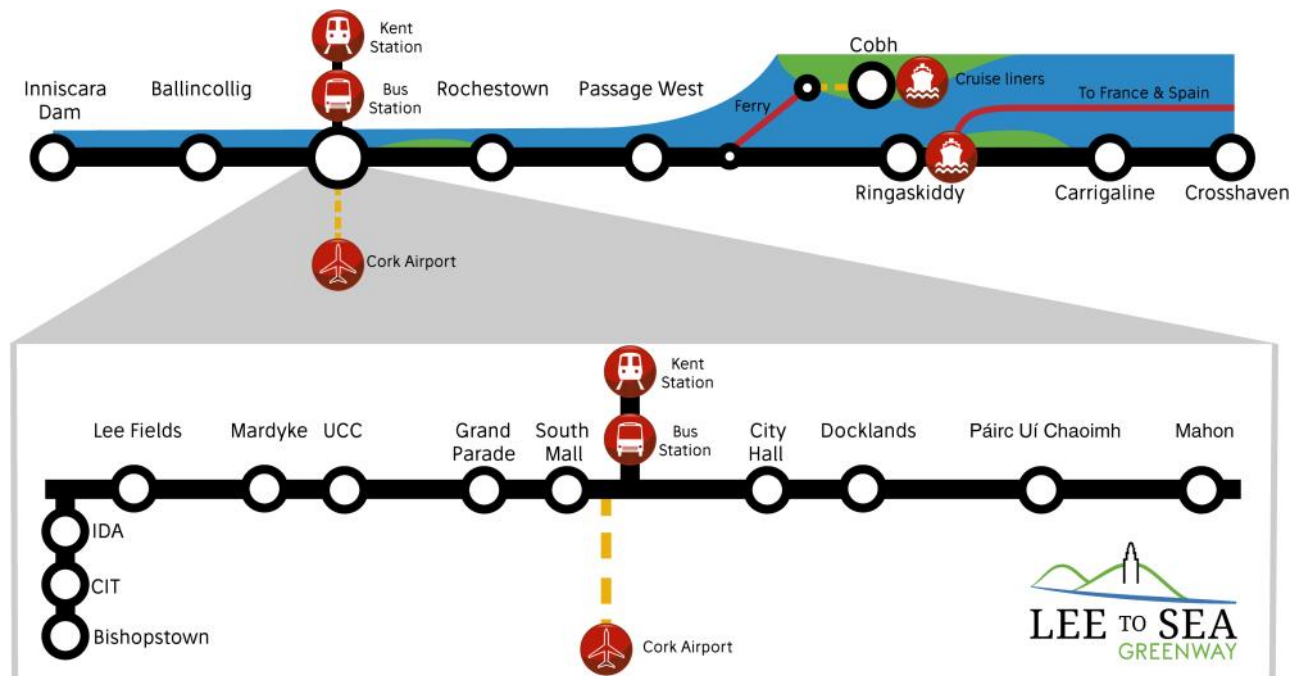
- high in quality,
- accessible for all ages and abilities,
- continuous and uniform, and
- welcoming and attractive.



City vs Country sections of route

Country sections of the route would be similar to existing 4m greenways in Ireland such as the Waterford greenway.

City Centre section would be adapted to suit urban location... for example, pedestrians and runners could use footpath whilst cycleway could run parallel and on the same level. City centre sections could be coloured green.



Where do we go from here?

- Establish partners interest and support
- Set up steering group to progress Lee to Sea greenway
- Identify exact details of route, infrastructure needs and estimated costs
- Produce delivery strategy including phasing in line with other plans/programmes
- Source funding streams for delivery and initial 15 years maintenance programme
- Gain appropriate permissions e.g. planning, building control, water drainage etc.
- Develop Greenway prioritising higher volume routes and easy-wins such as short connections of existing sections

Contact

This proposal has been created by Cork Cycling Campaign with support from TMF Cork and Healthy Cities. Dr Dean Venables from the Cork Cycling Campaign can be contacted via email on lee2sea@yahoo.com.

About the Cork Cycling Campaign

“Cork Cycling Campaign was started in 1999 by a small group who wanted to make Cork city and county cycle-friendly. Cycling is such a wonderful way of getting around – it’s fast, it’s economical, it’s sustainable, it’s healthy and it’s fun! It’s probably the most effective way to reduce your personal energy use and climate impact. Our vision is to see many more people cycling as a means of transport. The best and most liveable cities place pedestrians and cyclists – not motorized vehicles – at the centre of urban design and we want to see these practices adopted in our wonderful city of Cork and its surrounding county.”

Website: corkcyclingcampaign.com
Twitter: [@CorkCyclingCrew](https://twitter.com/CorkCyclingCrew)
Facebook: [@CorkCylingCrew](https://facebook.com/CorkCyclingCrew)



